

# HS-80D Thermal Printer

## Datasheet

### Version: V1.0

HS-80D The printer is a new type of thermal printer. It can support various types of paper printing, such as black label paper, perforated paper, continuous paper, folding paper, etc. The maximum paper thickness can reach 250 grams, which can meet the needs of different application scenarios.

### Apperance



### Features:

- Small size, easy to integrate into terminal devices
- Support 82.5mm paper width
- Support real-time control of printing quality
- Support automatic paper feeding mode
- Power Voltage: 24V±10%

- Support USB/RS232
- Support GDI printing mode
- Support black mark position, ensure the consistency of bill length
- Support paper near end detection for early warning of paper surplus
- Support paper output detection function, achieve ticket clamping mode and bullet mode

## Application:

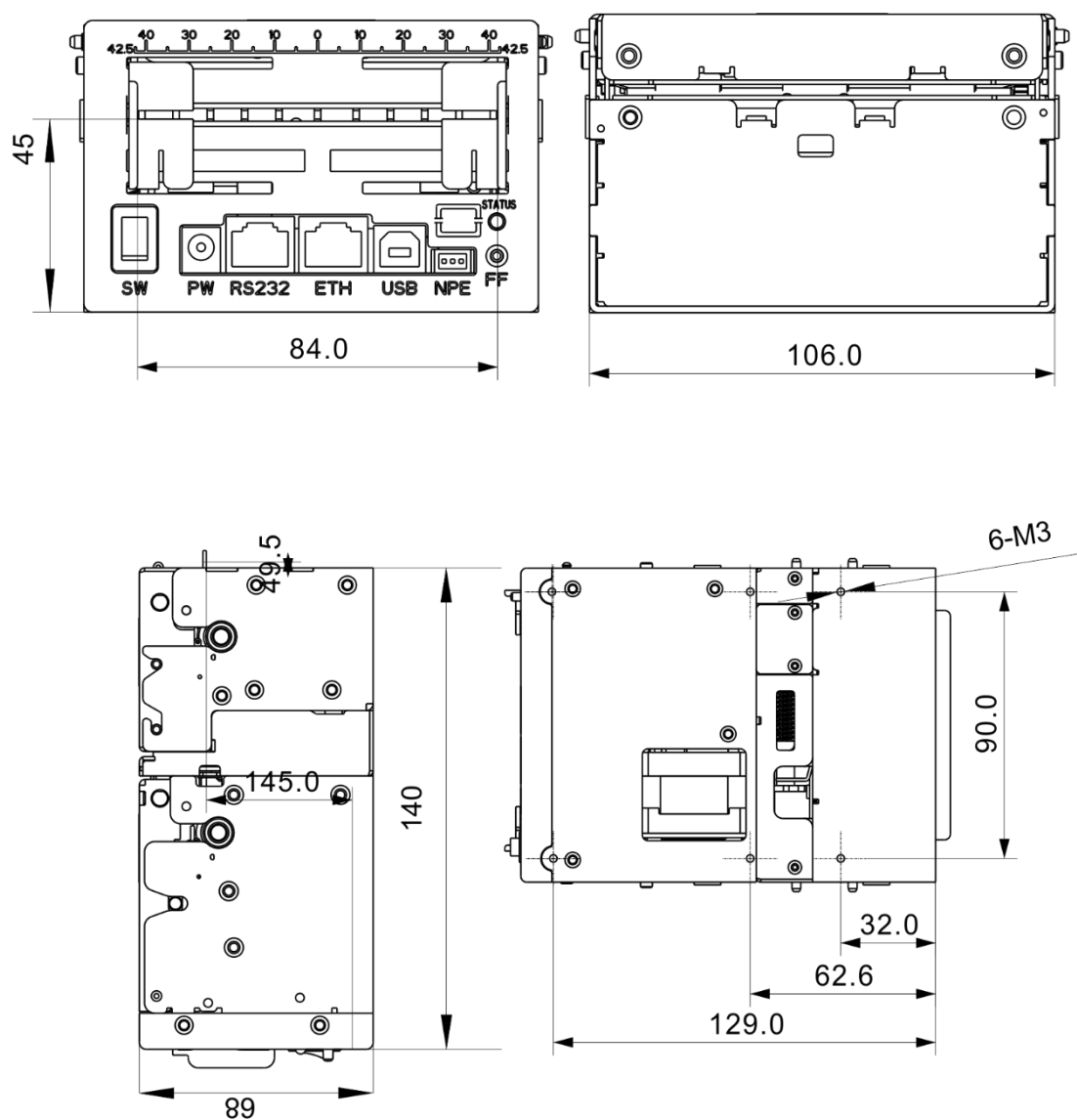
Airport、Medical Care、Public safety、Transportation、Social insurance, Energy, Gas stations, Hydropower, Government, Education.

## Parameters:

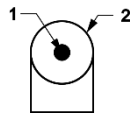
Item	Parameters
<b>Print method</b>	Thermal Printing
<b>Print width</b>	80mm
<b>Paper width</b>	MAX82.5mm
<b>Paper thickness</b>	60~250g/m <sup>2</sup>
<b>Roll diameter</b>	Outer diameter: Max150mm inner diameter: Min25.4mm
<b>Resolution</b>	203dpi
<b>Dot density</b>	8dots/mm
<b>Paper feed method</b>	180°automatic feeding
<b>Print speed</b>	MAX150mm/s
<b>Paper output</b>	ticket clamping mode and bullet mode
<b>Support character</b>	<ul style="list-style-type: none"> <li>●FONT A:12×24 (1.5×3mm) dot character</li> <li>●FONT B:9×17 (1.125×2.125mm) dot character</li> <li>●chinese character: support GB18030 simple chinese (compatible GB2312-1980)</li> </ul> <p>Note: GB18030 support double character 1、2、3、4、5 region</p>
<b>Barcode</b>	<ul style="list-style-type: none"> <li>●1D: EAN8、EAN13、CODE93、CODE128</li> <li>●2D: QR、PDF417</li> </ul>
<b>Interface</b>	RS232/USB
<b>Receive buffer</b>	2MB
<b>Command</b>	ESC/POS
<b>OS</b>	windows XP/WIN 7/8/Linux/Andorid
<b>detection</b>	No paper、pear near end、open up detection、motor temperature、black mark、paper out、cut paper jam
<b>Cutter</b>	Auto cutter full cutting
<b>Power</b>	24VDC±10%, 2.5Afull format all black printing 6A

<b>Energy consumption</b>	150W
<b>Environmental conditions</b>	temperature: 0~50°C humidity: 20~85%RH
<b>Storage</b>	Temperature: -25~70°C humidity: 0~90%RH(not include papers)
<b>Reliability</b>	Print head lifetime: 100KM Cutter lifetime: 1000000 cuts

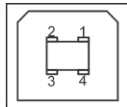
### Installation dimensions:



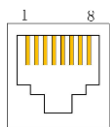
### Interface description:

**Power- DC5525**

pins	name	Input/output	feature
1	+24V DC	input	Power input
2	P-GND	—	earthing

**USB-TYPE-B**

pins	name	define
1	VCC	+5VDC
2	D-	data-
3	D+	data+
4	GND	earthing

**COM-RJ45**

pins	name	direction	feature
1	-	-	-
2	-	-	-
3	-	-	-
4	RXD	input	Receive data
5	TXD	output	Transmit data
6	-	-	-
7	RTS	output	Send data request
8	GND	—	Signal ground